

# CONTACT US

If you would like any further information, advice or support please contact SENDIASS Telford & Wrekin. This service is independent, impartial, confidential and free.

**Special Educational Needs and Disability Information Advice and Support Service (SENDIASS) Telford & Wrekin.**

Telford and Wrekin Council for Voluntary Services  
Suite 12 – 15 Hazledine House  
Central Square  
Telford Centre  
Telford  
Shropshire  
TF3 4JL

*The Children and Families Act 2014 says that local authorities must provide information, advice and support about special educational needs (SEN), disability, health and social care for children, young people and parents.*



**NHS**  
Telford and Wrekin  
Clinical Commissioning Group

 **01952 457176**  
(24 hour answer machine service)

 **info@iass.org.uk**

**www.telfordsendiass.org.uk**

 **IASS Telford and Wrekin**

Information Advice and Support Service



**SENDIASS**  
TELFORD & WREKIN

## Telford & Wrekin Information, Advice & Support Service

Telford and Wrekin SENDIASS Service provides access to impartial and independent information about Special Educational Needs and Disability (SEND), health and social care for children young people, parents/carers.

Information Advice and Support Service



**SENDIASS**  
TELFORD & WREKIN



# WHAT IS SPECIAL EDUCATIONAL NEEDS?

A child or young person has Special Educational Needs if they have a learning difficulty or disability requiring special educational provision.

If your child has significantly greater difficulty in learning than the majority of others of the same age, or has a disability that prevents him or her from making use of mainstream school facilities, then he or she may have a Special Educational Need (SEN).

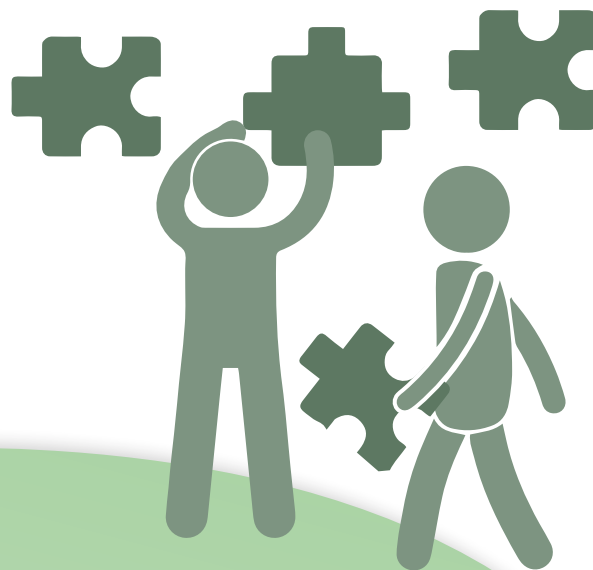
If you are concerned that your child may have SEN, you can contact our service for information, advice and support.

## FOR CHILDREN AND YOUNG PEOPLE

Do you have questions about your own educational needs?

Are you a young person with Special Educational needs who would like some help and support to express your views, wishes and feelings regarding your education.

Do you understand how to access the help and support you need?



# HOW CAN WE HELP?

- Provide information and advice on the telephone
- Meet you in person to discuss your concerns
- Help you to prepare for meetings
- Support to attend meetings
- Help to explain reports written by professionals
- Listen to your views and your concerns
- Working with you to explore your options
- Signpost to other sources of information and support
- Access to workshops relating to Special Educational Needs processes including information relating to health and social care
- Work in partnership with schools and the Local Authority to develop positive relationships and outcomes
- Giving you information in relation to SEND law to enable you to participate and make informed decisions regarding your child's education